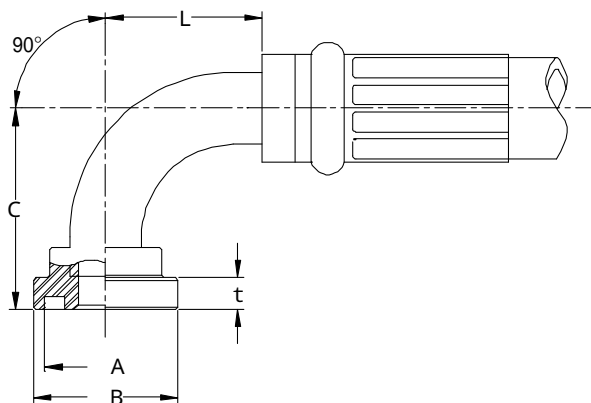


金具寸法表 (18 - 1)

S F 9 0

Y: SSF90
B: SR9
T: 90F3F

SAE TYPE 61、Oリング

ホースサイズ	ヘッドサイズ	部品番号	コード番号	A Oリング溝外径	B フランジ外径	t フランジ肉厚	L	C	CUTOFF
08	08	08SF90A-SS2W	01317301	25.4	30.2	6.7	28.0	43.0	43.0
		08SF90A2-SS2W	01317304	25.4	30.2	6.7	28.0	90.0	43.0
		08SF90A1-SS2W	01317305	25.4	30.2	6.7	28.0	130.0	43.0
		08SF90A3-SS2W	01317306	25.4	30.2	6.7	28.0	150.0	43.0
	12	12SF90A-SS2W08	01317302	31.8	38.1	6.7	28.0	44.0	43.0
16	16SF90A-SS2W08	01317303	39.6	44.5	8.0	28.0	44.0	43.0	
10	08	08SF90B1-SS2W10	01317403	25.4	30.2	6.7	28.0	53.0	45.0
	12	12SF90B-SS2W10	01317401	31.8	38.1	6.7	45.0	54.0	62.0
	16	16SF90B-SS2W10	01317402	39.6	44.5	8.0	45.0	54.0	62.0
12	08	08SF90B-SS2W12	01317502	25.4	30.2	6.7	28.0	43.0	45.0
		08SF90B3-SS2W12	01317517	25.4	30.2	6.7	28.0	90.0	43.0
		08SF90B2-SS2W12	01317505	25.4	30.2	6.7	28.0	130.0	43.0
		08SF90B1-SS2W12	01317506	25.4	30.2	6.7	28.0	150.0	43.0
	12	12SF90B-SS2W	01317501	31.8	38.1	6.7	45.0	54.0	62.0
		12SF90B1-SS2W	01317507	31.8	38.1	6.7	45.0	70.0	62.0
		12SF90B3-SS2W	01317508	31.8	38.1	6.7	45.0	100.0	62.0
		12SF90B4-SS2W	01317509	31.8	38.1	6.7	45.0	120.0	62.0
		12SF90B2-SS2W	01317510	31.8	38.1	6.7	45.0	150.0	62.0
	16	16SF90B-SS2W12	01317503	39.6	44.5	8.0	45.0	54.0	62.0
		16SF90B1-SS2W12	01317511	39.6	44.5	8.0	45.0	80.0	62.0
		16SF90B3-SS2W12	01317515	39.6	44.5	8.0	45.0	100.0	62.0
		16SF90B4-SS2W12	01317516	39.6	44.5	8.0	45.0	110.0	62.0
		16SF90B2-SS2W12	01317514	39.6	44.5	8.0	45.0	150.0	62.0
	20	20SF90B-SS2W12	01317504	44.5	50.8	8.0	45.0	54.0	62.0
20SF90B1-SS2W12		01317512	44.5	50.8	8.0	45.0	90.0	62.0	
16	12	12SF90B-SS2W16	01317602	31.8	38.1	6.7	45.0	54.0	63.0
		12SF90B1-SS2W16	01317605	31.8	38.1	6.7	45.0	120.0	63.0
		12SF90B2-SS2W16	01317613	31.8	38.1	6.7	45.0	150.0	63.0
	16	16SF90B1-SS2W	01317606	39.6	44.5	8.0	50.0	60.0	70.0
		16SF90B-SS2W	01317601	39.6	44.5	8.0	50.0	66.0	70.0
		16SF90B7-SS2W	01317607	39.6	44.5	8.0	50.0	95.0	70.0
		16SF90B8-SS2W	01317615	39.6	44.5	8.0	50.0	100.0	70.0
		16SF90B3-SS2W	01317608	39.6	44.5	8.0	50.0	120.0	70.0
		16SF90B5-SS2W	01317609	39.6	44.5	8.0	50.0	160.0	70.0
16SF90B9-SS2W	01317616	39.6	44.5	8.0	50.0	210.0	70.0		

金具寸法表 (18 - 2)

ホースサイズ	ヘッドサイズ	部品番号	コード番号	A Oリング溝外径	B フランジ外径	t フランジ肉厚	L	C	CUTOFF	
16	20	20SF90B2-SS2W16	01317610	44.5	50.8	8.0	50.0	60.0	70.0	
		20SF90B-SS2W16	01317603	44.5	50.8	8.0	50.0	66.0	70.0	
		20SF90B4-SS2W16	01317614	44.5	50.8	8.0	50.0	90.0	70.0	
		20SF90B1-SS2W16	01317611	44.5	50.8	8.0	50.0	120.0	70.0	
		20SF90B3-SS2W16	01317612	44.5	50.8	8.0	50.0	160.0	70.0	
		20SF90B5-SS2W16	01317617	44.5	50.8	8.0	50.0	210.0	70.0	
	24	24SF90B-SS2W16	01317604	53.8	60.3	8.0	50.0	68.0	70.0	
20	16	16SF90-SS1820	01377704	39.6	44.5	8.0	50.0	66.0	74.0	
		16SF90-SS2120	01377705	39.6	44.5	8.0	50.0	66.0	74.0	
		16SF90A1-SS2120	01377713	39.6	44.5	8.0	50.0	210.0	64.0	
	20	20SF90-SS11	20SF90-SS11	01377701	44.5	50.8	8.0	63.0	79.0	84.0
			20SF90A4-SS18	01377708	44.5	50.8	8.0	63.0	65.0	87.0
			20SF90-SS18	01377702	44.5	50.8	8.0	63.0	79.0	87.0
			20SF90A1-SS18	01377709	44.5	50.8	8.0	63.0	120.0	87.0
			20SF90A2-SS18	01377710	44.5	50.8	8.0	63.0	165.0	87.0
			20SF90-SS21	01377703	44.5	50.8	8.0	63.0	79.0	87.0
			24SF90-SS1820	01377706	53.8	60.3	8.0	63.0	81.0	87.0
	24	24SF90A2-SS1820	24SF90A2-SS1820	01377712	53.8	60.3	8.0	63.0	120.0	87.0
			24SF90A1-SS1820	01377711	53.8	60.3	8.0	63.0	170.0	87.0
			24SF90-SS2120	01377707	53.8	60.3	8.0	63.0	79.0	87.0
			20SF90A1-SS1424	01377806	44.5	50.8	8.0	63.0	110.0	87.0
24	20	20SF90A2-SS1424	01377807	44.5	50.8	8.0	63.0	168.0	87.0	
		24SF90-SS07	01377801	53.8	60.3	8.0	75.0	91.0	96.0	
	24	24SF90-SS14	24SF90-SS14	01377802	53.8	60.3	8.0	75.0	91.0	99.0
			24SF90-SS21	01377803	53.8	60.3	8.0	75.0	91.0	99.0
			32SF90-SS1424	01377804	63.4	71.4	9.5	75.0	91.0	99.0
	32	32	32SF90-SS07	01377901	63.4	71.4	9.5	95.0	114.0	123.0
			32SF90-SS14	01377902	63.4	71.4	9.5	95.0	114.0	126.0
32SF90-SS18			01377903	63.4	71.4	9.5	95.0	114.0	126.0	